

PART NUMBER	CYLINDER BORE	OUTSIDE DIAMETER	ROD DIAMETER	A	B	C	D	E	F	G	H	PORTS*
WT3-15-S	1.50"	1.875"	1.00"	7.00"	1.25"	0.64"	2.43"	0.62"	2.00"	0.81"	1.87"	SAE 6
WT3-20-S	2.00"	2.375"	1.25"	8.00"	1.25"	0.76"	3.37"	0.75"	2.50"	0.81"	1.87"	SAE 8
WT3-25-S	2.50"	2.875"	1.37"	8.00"	1.25"	0.76"	3.12"	0.75"	3.00"	0.81"	2.06"	SAE 8
WT3-30-S	3.00"	3.50"	1.50"	8.00"	1.50"	1.01"	2.56"	1.00"	3.50"	0.81"	2.18"	SAE 8
WT3-35-S	3.50"	4.00"	1.75"	8.00"	1.50"	1.01"	2.43"	1.00"	4.00"	0.81"	2.18"	SAE 8
WT3-40-S	4.00"	4.50"	2.00"	9.00"	2.00"	1.26"	2.43"	1.25"	4.50"	0.81"	2.18"	SAE 8

1. FOR 8" STROKE : A = 12.25" (2" TO 4" BORE)  
 2. FOR 8" STROKE : E = 5.12" (2" TO 4" BORE)  
 MAXIMUM RETRACTED WORKING PRESSURE : 3000 PSI

\*NPT PORTS ARE ALSO AVAILABLE  
 MAXIMUM RETRACTED WORKING PRESSURE : 3000 psi  
 MAXIMUM EXTENDED WORKING PRESSURE : TABLE  
 RETRACTED AND STROKE TOLERANCE ± 1/8"

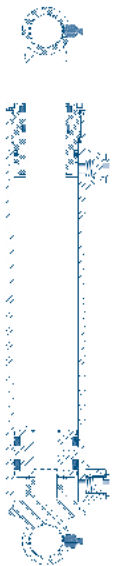
**UTILITY CYLINDER THROUGH HOLE TYPE**

PART NUMBER	BORE & STROKE	DIMENSIONS		ROD DIAMETER	PIN SIZE	PORTS*	COLUMN LOADS (LBS)	PRESSURE (PSI)	WEIGHT (LBS)
		RETRACTED	EXTENDED						
WT3-1504-S	1.5" X 4"	11"	15"	1"	5/8"	SAE 6	5300	3000	7
WT3-1506-S	1.5" X 6"	13"	19"				5300	3000	8
WT3-1508-S	1.5" X 8"	15"	23"				5300	3000	9
WT3-1510-S	1.5" X 10"	17"	27"				5300	3000	11
WT3-1512-S	1.5" X 12"	19"	31"				5300	3000	12
WT3-1514-S	1.5" X 14"	21"	35"				5300	3000	13
WT3-1516-S	1.5" X 16"	23"	39"				5300	3000	14
WT3-2004-S	2" X 4"	12"	16"	1-1/4"	3/4"	SAE 8	9400	3000	11
WT3-2006-S	2" X 6"	14"	20"				9400	3000	12
WT3-2008-S	2" X 8"	16"	24"				9400	3000	14
WT3-2010-S	2" X 10"	18"	28"				9400	3000	16
WT3-2012-S	2" X 12"	20"	32"				9400	3000	17
WT3-2014-S	2" X 14"	22"	36"				9400	3000	19
WT3-2016-S	2" X 16"	24"	40"				9400	3000	21
WT3-2018-S	2" X 18"	26"	44"				9400	3000	22
WT3-2020-S	2" X 20"	28"	48"				9400	3000	24
WT3-2024-S	2" X 24"	32"	56"				7300	2300	27
WT3-2028-S	2" X 28"	36"	64"				5600	1700	31
WT3-2030-S	2" X 30"	38"	68"				4900	1500	33
WT3-2032-S	2" X 32"	40"	72"				4400	1400	34
WT3-2036-S	2" X 36"	44"	80"				3500	1100	38
WT3-2040-S	2" X 40"	48"	88"	2900	900	41			
WT3-2042-S	2" X 42"	50"	92"	2700	800	43			
WT3-2048-S	2" X 48"	56"	104"	2100	600	48			
WT3-2060-S	2" X 60"	68"	128"	1400	400	58			
WT3-2072-S	2" X 72"	80"	152"	900	300	68			

\* NPT PORTS ARE ALSO AVAILABLE.

NOTE : COLUMN LOAD IS THE MAXIMUM PUSHING LOAD SUGGESTED USING A MINIMUM SAFETY FACTOR OF 2 AND BASED ON A PIN TO PIN MOUNTING CALCULATION.

HYDRO CUSTOM IS NOT RESPONSIBLE FOR INCORRECT RESULTS OBTAINED WITH FIGURES IN THIS DOCUMENT. INFORMATION IS FOR REFERENCE ONLY. NO OTHER CONDITIONS ARE EXPRESSED OR IMPLIED.



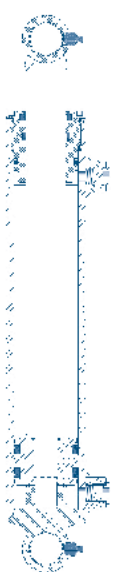


WELDED THROUGH HOLE TYPE

PART NUMBER	BORE & STROKE	DIMENSIONS		ROD DIAMETER	PIN SIZE	PORTS*	COLUMN LOADS (LBS)	PRESSURE (PSI)	WEIGHT (LBS)			
		RETRACTED	EXTENDED									
WT3-2504-S	2.5" X 4"	12"	16"	1-3/8"	3/4"	SAE 8	14700	3000	14			
WT3-2506-S	2.5" X 6"	14"	20"				14700	3000	16			
WT3-2508-S	2.5" X 8"	16"	24"				14700	3000	18			
WT3-2510-S	2.5" X 10"	18"	28"				14700	3000	20			
WT3-2512-S	2.5" X 12"	20"	32"				14700	3000	22			
WT3-2514-S	2.5" X 14"	22"	36"				14700	3000	24			
WT3-2516-S	2.5" X 16"	24"	40"				14700	3000	26			
WT3-2518-S	2.5" X 18"	26"	44"				14700	3000	28			
WT3-2520-S	2.5" X 20"	28"	48"				14600	2900	30			
WT3-2524-S	2.5" X 24"	32"	56"				10700	2100	35			
WT3-2528-S	2.5" X 28"	36"	64"				8200	1600	39			
WT3-2530-S	2.5" X 30"	38"	68"				7200	1400	41			
WT3-2532-S	2.5" X 32"	40"	72"				6500	1300	43			
WT3-2536-S	2.5" X 36"	44"	80"				5200	1000	47			
WT3-2540-S	2.5" X 40"	48"	88"				4300	800	51			
WT3-2542-S	2.5" X 42"	50"	92"				3900	800	53			
WT3-2548-S	2.5" X 48"	56"	104"				3100	600	60			
WT3-2560-S	2.5" X 60"	68"	128"				2000	400	72			
WT3-3006-S	3" X 6"	14"	20"				1-1/2"	1"	SAE 8	21200	3000	21
WT3-3008-S	3" X 8"	16"	24"							21200	3000	24
WT3-3010-S	3" X 10"	18"	28"	21200	3000	26						
WT3-3012-S	3" X 12"	20"	32"	21200	3000	28						
WT3-3014-S	3" X 14"	22"	36"	21200	3000	31						
WT3-3016-S	3" X 16"	24"	40"	21200	3000	33						
WT3-3018-S	3" X 18"	26"	44"	21200	3000	36						
WT3-3020-S	3" X 20"	28"	48"	20700	2900	38						
WT3-3024-S	3" X 24"	32"	56"	15200	2100	43						
WT3-3028-S	3" X 28"	36"	64"	11600	1600	48						
WT3-3030-S	3" X 30"	38"	68"	10300	1400	51						
WT3-3032-S	3" X 32"	40"	72"	9200	1300	53						
WT3-3036-S	3" X 36"	44"	80"	7400	1000	58						
WT3-3040-S	3" X 40"	48"	88"	6100	800	63						
WT3-3042-S	3" X 42"	50"	92"	5600	700	65						
WT3-3048-S	3" X 48"	56"	104"	4400	600	73						
WT3-3060-S	3" X 60"	68"	128"	2900	400	87						

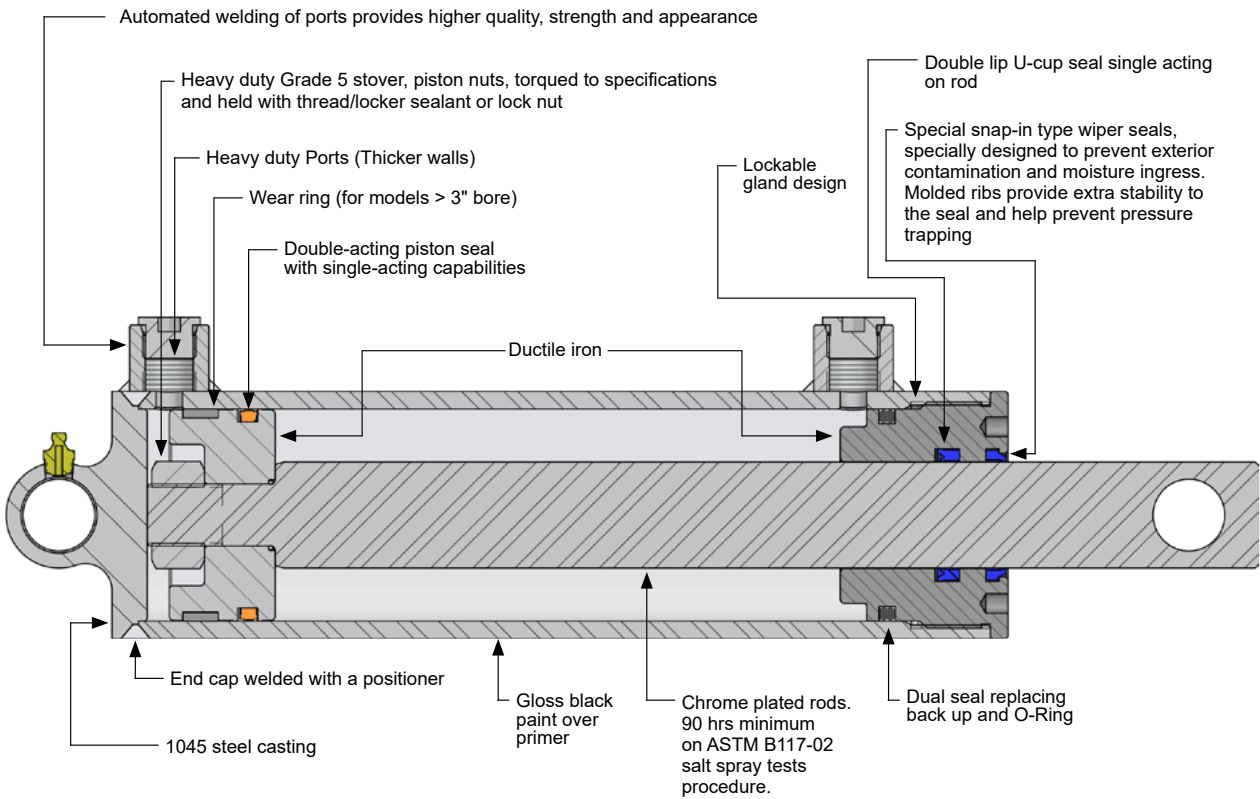
\* NPT PORTS ARE ALSO AVAILABLE.

NOTE : COLUMN LOAD IS THE MAXIMUM PUSHING LOAD SUGGESTED USING A MINIMUM SAFETY FACTOR OF 2 AND BASED ON A PIN TO PIN MOUNTING CALCULATION.



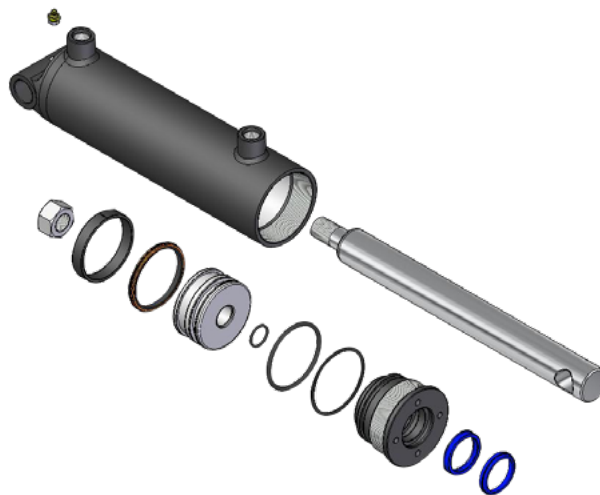
WELDED THROUGH HOLE TYPE									
PART NUMBER	BORE & STROKE	DIMENSIONS		ROD DIAMETER	PIN SIZE	PORTS*	COLUMN LOADS (LBS)	PRESSURE (PSI)	WEIGHT (LBS)
		RETRACTED	EXTENDED						
WT3-3504-S	3.5" X 4"	12"	16"	1-3/4"	1"	SAE 8	28800	3000	24
WT3-3506-S	3.5" X 6"	14"	20"				28800	3000	27
WT3-3508-S	3.5" X 8"	16"	24"				28800	3000	30
WT3-3510-S	3.5" X 10"	18"	28"				28800	3000	33
WT3-3512-S	3.5" X 12"	20"	32"				28800	3000	36
WT3-3514-S	3.5" X 14"	22"	36"				28800	3000	39
WT3-3516-S	3.5" X 16"	24"	40"				28800	3000	42
WT3-3518-S	3.5" X 18"	26"	44"				28800	3000	45
WT3-3520-S	3.5" X 20"	28"	48"				28800	3000	48
WT3-3524-S	3.5" X 24"	32"	56"				28100	2900	54
WT3-3528-S	3.5" X 28"	36"	64"				21500	2200	60
WT3-3530-S	3.5" X 30"	38"	68"				19100	1900	63
WT3-3532-S	3.5" X 32"	40"	72"				17000	1700	66
WT3-3536-S	3.5" X 36"	44"	80"				13800	1400	72
WT3-3540-S	3.5" X 40"	48"	88"				11400	1100	79
WT3-3542-S	3.5" X 42"	50"	92"				10400	1000	82
WT3-3548-S	3.5" X 48"	56"	104"				8100	800	91
WT3-4008-S	4" X 8"	17"	25"				2"	1-1/4"	SAE 8
WT3-4010-S	4" X 10"	19"	29"	37700	3000	44			
WT3-4012-S	4" X 12"	21"	33"	37700	3000	47			
WT3-4014-S	4" X 14"	23"	37"	37700	3000	51			
WT3-4016-S	4" X 16"	25"	41"	37700	3000	55			
WT3-4018-S	4" X 18"	27"	45"	37700	3000	58			
WT3-4020-S	4" X 20"	29"	49"	37700	3000	62			
WT3-4024-S	4" X 24"	33"	57"	37700	3000	70			
WT3-4028-S	4" X 28"	37"	65"	35600	2800	77			
WT3-4030-S	4" X 30"	39"	69"	31600	2500	81			
WT3-4032-S	4" X 32"	41"	73"	28300	2200	84			
WT3-4036-S	4" X 36"	45"	81"	22900	1800	91			
WT3-4040-S	4" X 40"	49"	89"	19000	1500	99			
WT3-4048-S	4" X 48"	57"	105"	13600	1000	114			
WT3-4060-S	4" X 60"	69"	129"	9000	700	136			

\* NPT PORTS ARE ALSO AVAILABLE.  
 NOTE : COLUMN LOAD IS THE MAXIMUM PUSHING LOAD SUGGESTED USING A MINIMUM SAFETY FACTOR OF 2 AND BASED ON A PIN TO PIN MOUNTING CALCULATION.



SEAL TEMPERATURE RANGE : -30°C / +100°C (-22°F / +212°F)  
 SEAL MAXIMUM SPEED : 3 FT / SEC

ALL SEALS ARE TOP GRADE/FIRST QUALITY NORTH AMERICAN MADE  
 ALL COMPONENTS ARE CNC MACHINED FOR HIGHER ACCURACY AND CONFORMITY  
 QUALITY CONTROLLED IN CHINA BY QUALIFIED CANADIAN TECHNICIANS  
 100% TESTED. ALL CYLINDERS ARE SUBMITTED TO STATIC AND DYNAMIC PRESSURE TESTS TO RECOMMENDED SPECIFICATIONS



HYDRO CUSTOM IS NOT RESPONSIBLE FOR INCORRECT RESULTS OBTAINED WITH FIGURES IN THIS DOCUMENT. INFORMATION IS FOR REFERENCE ONLY. NO OTHER CONDITIONS ARE EXPRESSED OR IMPLIED.